

# MONTHLY MEMBERSHIP PROGRESS REPORT

LOCATION ZAMBIA

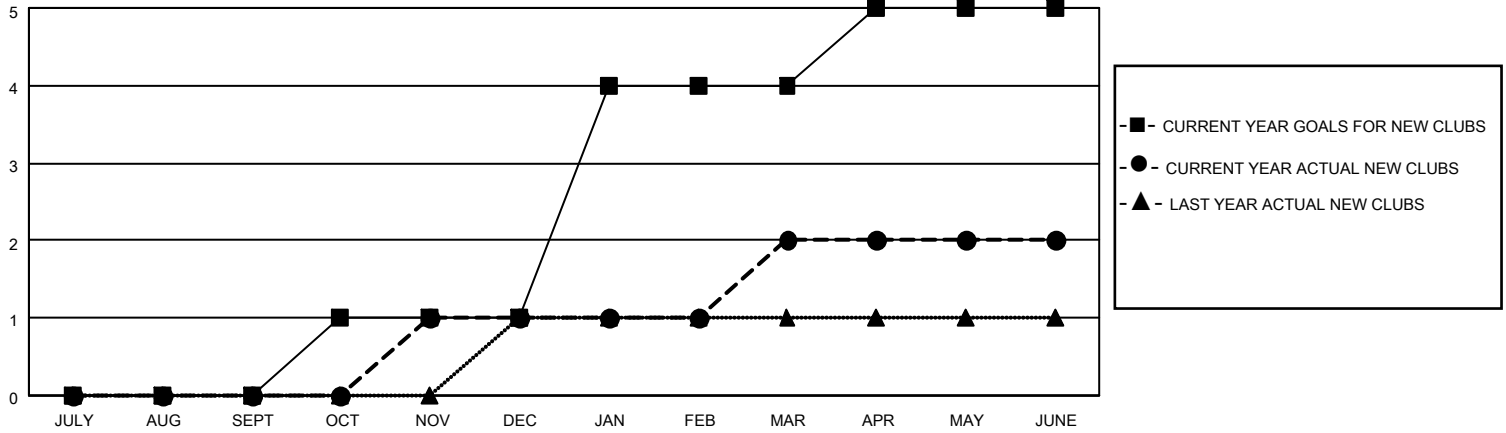
District 413

Results as of: 6/30/2022

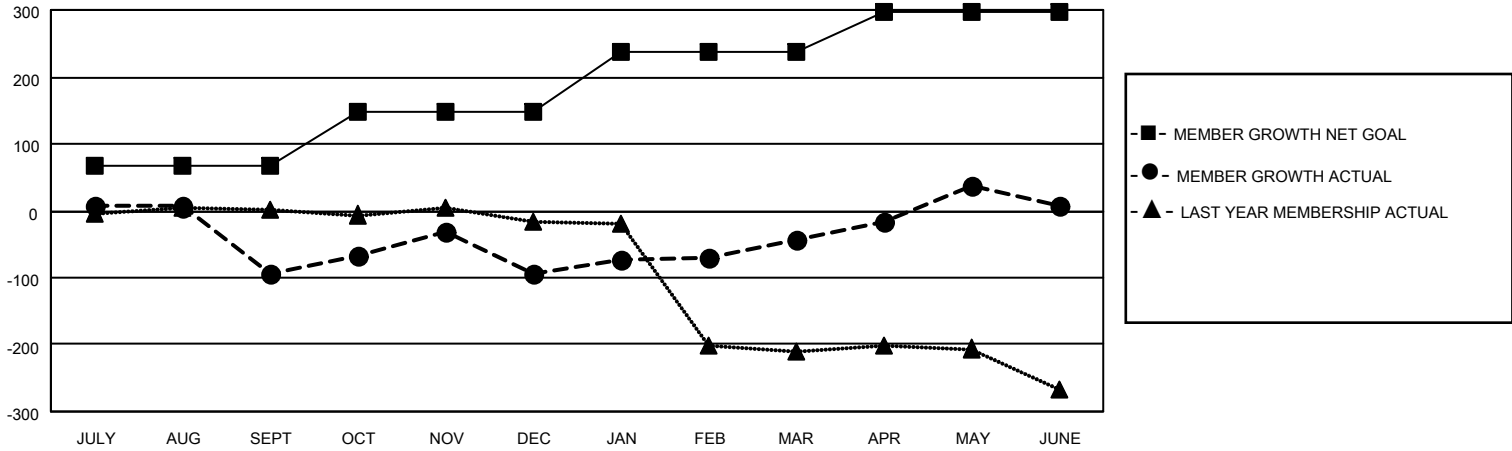
Clubs			
RESULTS FOR 2021-2022			
QUARTER	NEW CLUB GOAL	NEW CLUBS	DROPPED CLUBS
JULY/AUG/SEPT	0	0	6
OCT/NOV/DEC	1	1	3
JAN/FEB/MAR	3	1	1
APR/MAY/JUNE	1	0	1

Members			
RESULTS FOR 2021-2022			
QUARTER	MEMBER GROWTH NET GOAL	MEMBER GROWTH ACTUAL	DROPPED MEMBERS ACTUAL (including transfers)
JULY/AUG/SEPT	68	65	113
OCT/NOV/DEC	80	187	123
JAN/FEB/MAR	90	111	30
APR/MAY/JUNE	60	172	98

**GOALS AND ACTUAL NEW CLUBS CUMULATIVE**



**GOALS AND ACTUAL MEMBERS CUMULATIVE**



**DROPPED CLUBS: 11**

**39 CLUBS OF 53 ADDED 1 OR MORE NEW MEMBERS**

**GENDER DISTRIBUTION**

MALE	643 (51.11%)
FEMALE	614 (48.81%)
NON BINARY	1 (0.08%)
PREFER NOT TO ANSWER	0 (0.00%)

**DROPPED MEMBERS**

DECEASED	12
CLUB CANCELLED	184
OTHER	168
<b>TOTAL</b>	<b>364</b>

[CLICK HERE FOR CUMULATIVE MEMBERSHIP DATA](#)

TOTAL FAMILY UNIT MEMBERS	61
FAMILY MEMBERS PAYING HALF DUES	32